

**2011 - 2012  
 Officers & Directors**

**President /** Linda McNutt  
 Ryerson  
 490-5229  
[linda.mcnutt@ryerson.com](mailto:linda.mcnutt@ryerson.com)

**Vice President/**Sherry Farrow  
 Glazer's Distributors of AR  
 955-410  
[sfarrow@glazers.com](mailto:sfarrow@glazers.com)

**Secretary /** Tiffany Phillips  
 Alzheimer's Association  
 265-0027  
[tiffany.phillips@alz.org](mailto:tiffany.phillips@alz.org)

**Treasurer /** Lynn Harbert  
 Delta Dental of Arkansas, Inc.  
 992-1604  
[lharbert@ddpar.com](mailto:lharbert@ddpar.com)

**Sergeant at Arms**  
 Darlean King  
 Enterprise Financial Solutions,  
 Inc.  
 375-2822  
[dking@efsolutionsinc.com](mailto:dking@efsolutionsinc.com)

**Ways & Means/**Diane Kidwell  
 Heart of Arkansas United Way  
 376-4567  
[dkidwell@heartaruw.org](mailto:dkidwell@heartaruw.org)

**Membership Director**  
 Carole George  
 DataMax Micro  
 603-3013  
[cgeorge@datamax-lr.com](mailto:cgeorge@datamax-lr.com)

**Programs /** Linda Young  
 Embassy Suites  
 537-3308  
[linda.young@jgh.com](mailto:linda.young@jgh.com)

**Publications Director**  
 Lisa Kilby  
 Financial Centre Corporation  
 224-9600  
[lisa@financialcentrecorp.com](mailto:lisa@financialcentrecorp.com)



Please bring a non-perishable food item to the November Chapter Meeting to donate to the Arkansas Foodbank.

Directions to Capers: Approximately 2.8 miles west on Cantrell Rd. off I-430 toward Pinnacle Mountain.

**LR Chapter  
 EWI® Meeting**

Date  
 November 8, 2011

**\*\*Location Change\*\***  
 Capers  
 14502 Cantrell Rd.  
 Little Rock, AR 72223

Schedule  
 5:30 Networking  
 5:45 Meeting Called to Order

Standing Reservations  
 All Chapter representatives have a standing reservation. If you will be unable to attend, you must inform the Sergeant at Arms, Darlean King, no later than noon on Friday, November 4<sup>th</sup>.

Board Meeting  
 November 17<sup>th</sup>  
 @ Datamax Micro

Remember to bring \$\$\$\$ for the Monthly Raffle

**President's Message**

*FOLLOW THE PATH*



As the leaves start to change and everything around us becomes more colorful, we know fall is fast approaching. That means we have a new Champion baseball team, football games occupy our weekends, pumpkins are everywhere and Thanksgiving is around the corner.

*Continued on page 2*

**President's Message Continued**

The chapter has been busy as we *follow the path* to new adventures. **Lisa Kilby, Financial Centre**, did a great job as she created her first chapter newsletter. **Linda Young, Embassy Suites**, started with a new venue for our October Chapter Meeting. Everyone enjoyed an evening of fellowship, hearing more about what happens at LCAM, participated in a self-assessment of their strengths and weaknesses on trust and ended with **Lynn Harbert, Delta Dental of Arkansas**, winning the monthly raffle. Thank you Linda for a fun evening and delicious meal with an added treat of taking an extra dessert home. **Carole George, Datamax Micro**, and the membership committee have met and hard at work. Please see Carole for details about the opportunity to win a \$50 gift card. **Janet Webster, Arkansas Children's Hospital**, and the courtesy committee have met and we will see their smiling faces as they welcome you at our monthly chapter meetings along with **Darlean King, EF Solutions, Inc.** Each committee will meet before the end of the year and we cannot wait to hear what exciting paths we will follow throughout the year.

I look forward to seeing you on November 8<sup>th</sup> at Caper's. We will meet Kathy Kaigler with Arkansas Food Bank. Please remember to bring a non-perishable food item to the meeting. *I hope you and your family have a safe and Happy Thanksgiving Holiday.*

Linda McNutt  
 EWI of Little Rock  
 President, 2011 – 2012  
 Representing Ryerson

\*\*\*\*\*

**October Chapter Meeting**

The October Chapter Meeting was held at Bosco's in the River Market. To continue with President Linda McNutt's theme of Broadway musicals, each member was asked to tell the group their favorite musical during roll call. Some of the favorites were 42<sup>nd</sup> Street, Jesus Christ Superstar, Cats & Wicked.

With the upcoming Susan G. Komen Race for the Cure, Roz Smith representing Aristotle shared her story of surviving breast cancer when she gave the invocation.

President Linda McNutt passed on to the Chapter what she learned from a guest speaker David Horsager at LCAM in Minneapolis. Mr. Horsager believes that "trust not money is the currency of life" and he has developed 8 pillars of trust. Representatives filled out a self-assessment form to identify which of the 8 pillars were strong and which needed attention. Linda also revealed the results of the questionnaire distributed at the September Chapter meeting for topics from programs, scholarships, potlucks and raffles.



**Bosco's**

## Photo Gallery

### October 2011 Chapter Meeting



Roz Smith of Aristotle gives the Invocation.



President Linda McNutt of Ryerson welcomes Chapter to October Chapter Meeting.

Sherry Smith of Entergy Arkansas & Darlean King of Enterprise Financial Solutions visit before the Chapter Meeting begins.



---

### 2011 Race for the Cure

*\*Photo's submitted by Leighsan Harrod*



*[Please submit photos to be included in our Photo Gallery of you and/or your firm fulfilling EWI's® Mission Statement.]*

## NOVEMBER CHAPTER MEETING PROGRAM HIGHLIGHT



Each week, through the Arkansas Foodbank, 23,000 people are fed.

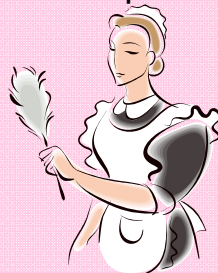
- Why are that many people in need of food assistance?
- How is it possible to serve 23,000 people in one week?
- Where does the Foodbank get the food?

Kathy Kaigler, Outreach Coordinator at the Arkansas Foodbank, will discuss the issues of hunger in Arkansas and how the Arkansas Foodbank is working to create a community where no one has to go hungry. With letters from the many food recipients, Kathy will share with us not only hunger statistics for our state but also some very personal stories from those that are being served.

---

## November's Monthly Raffle

Get your wallets out because you're going to want to win this one! Lynn Harbert representing member firm Delta Dental has once again provided a \$150 gift certificate from Molly Maid as this month's raffle prize. This will surely come in handy getting your house ready for the upcoming holidays.





## Get online & set up your MyEWI profile today!

<http://my.ewiconnect.com/welcome.htm>

**MyEWI Page:** The "MyEWI Page" gives you a overview of what is happening in the community. This page is much like the news feed page you find on a Facebook account.

**People:** The "People" page allows you to find everyone within the social network.

**Groups:** Everyone has groups they belong to within MyEWI. Volunteer positions within EWI will also have placed you within additional groups. Groups allow individuals with groups to easily talk about and discuss information pertaining to their group. Groups can include Chapters, Committees, Membership, and any other group of individuals with the same purpose or goal.

**Calendar:** The MyEWI network has many calendars. There are general calendars for all members, calendars for each group, and a calendar for everyone within the network. Your "My Calendar" includes all events that pertain to your individual groups you belong as well as the general member calendar.

**Forums:** Forums are like bulletin boards. They allow MyEWI participants to post questions and allow others to respond, discuss and answer the postings.

We invite you to explore the new social network and more importantly participate. Please email [ewi@ewiconnect.com](mailto:ewi@ewiconnect.com) with any questions or call the EWI Corporate office.

## Mission Statement

Executive Women International® brings together key individuals from diverse businesses for the purpose of:

- Promoting Member Firms
- Enhancing Personal and Professional Development
- Encouraging Community Involvement

## View our EWI Little Rock member firms on the web...

(Link – Firm – Representative)

<http://www.alz.org/alzokar/> - Alzheimer's Assoc., Oklahoma & Arkansas Chapter – Tiffany Phillips

[www.americanabstracttitle.com](http://www.americanabstracttitle.com) – American Abstract Title Company – Sharon Adkins

<http://www.aristotlewebdesign.com/> - Aristotle – Roz Smith

[www.arkansasbluecross.com](http://www.arkansasbluecross.com) – Arkansas Blue Cross & Blue Shield – Wanda King

[www.archildrens.org](http://www.archildrens.org) – Arkansas Children's Hospital - Leighsan Harrod & Janet Webster

[www.arkansasstatechamber.com](http://www.arkansasstatechamber.com) – Arkansas State Chamber - Deb Mathis

<https://www.arvest.com/> - Arvest Bank – Paula Gean

[www.bhbillion.com](http://www.bhbillion.com) – BHB Billiton - Peggy Maxell

[www.datamaxarkansas.com](http://www.datamaxarkansas.com) – DataMax Micro – Carole George

[www.deltadental.com](http://www.deltadental.com) - Delta Dental of Arkansas, Inc. – Lynn Harbert

[http://embassysuites1.hilton.com/en\\_US/es/hotel/LITCPES-Embassy-Suites-Little-Rock-Arkansas/index.do](http://embassysuites1.hilton.com/en_US/es/hotel/LITCPES-Embassy-Suites-Little-Rock-Arkansas/index.do) - Embassy Suites - Linda Young

[www.energy.com](http://www.energy.com) – Entergy Arkansas, Inc. - Sherry Smith

<http://efolutionsinc.com/> - Enterprise Financial Solutions, Inc. – Darlean King

[www.glazers.com](http://www.glazers.com) – Glazer's Distributors of Arkansas – Sherry Farrow

[www.heartaruw.org](http://www.heartaruw.org) – Heart of Arkansas United Way – Diane Kidwell

[www.midsouth.dalecarnegie.com](http://www.midsouth.dalecarnegie.com) – Howard Mohorn & Associates/Dale Carnegie – Starla Cooley

[www.onebanc.com](http://www.onebanc.com) - One Bank - Elizabeth Meyer

<http://www.ryerson.com/> - Ryerson – Linda McNutt

<https://www.stvincenthealth.com/> - St. Vincent Health System – Carol Massery

<http://www.wyndhamworldwide.com/> - Wyndham Worldwide, Inc. – Sharon Ferguson

**Meeting Minutes**

**MINUTES OF CHAPTER ANNUAL BUSINESS MEETING  
LITTLE ROCK CHAPTER  
EXECUTIVE WOMEN INTERNATIONAL**

**August 16, 2011**

**CALL TO ORDER**

The Little Rock Chapter of EWI Chapter Annual Business Meeting was held at Glazer's Distributing. The meeting was called to order by President Leighsan Harrod at 5:58 pm.

Linda McNutt asked that everyone fill out and return the questionnaires regarding chapter fundraising that have been left on the tables.

**ROLL CALL**

**INVOCATION**

The invocation was given by Diane Kidwell of Heart of Arkansas United Way.

**DINNER**

**BUSINESS MEETING:**

Minutes of the Chapter Business Meeting held on February 15, 2011 were approved by a motion made by Carole George and seconded by Sherry Farrow.

**Election of 2011-2012 Officers and Directors**

On behalf of the Nominating Committee Carole George made a motion to elect the proposed slate of officers. The motion was seconded by Roz Smith and passed unanimously.

<b>President</b>	<b>Linda McNutt / Ryerson</b>
<b>VP/President Elect</b>	<b>Sherry Farrow / Glazer's Distributors of AR</b>
<b>Secretary</b>	<b>Tiffany Phillips / Alzheimer's Association</b>
<b>Treasurer</b>	<b>Lynn Harbert / Delta Dental</b>
<b>Sergeant at Arms</b>	<b>Darlean King / Enterprise Financial Solutions, Inc.</b>
<b>Membership Director</b>	<b>Carole George / Datamax Micro</b>
<b>Program Director</b>	<b>Linda Young / Embassy Suites</b>
<b>Publications Director</b>	<b>Lisa Kilby / Financial Centre Corporation</b>
<b>Ways and Means Director</b>	<b>Diane Kidwell / Heart of Arkansas United Way</b>

**Election of Nominating Committee Members**

The Chapter Bylaws call for three committee members to be nominated for the 2011-2012 Nominating Committee from the general membership and who are not serving on the 2011-2012 Board. Roz Smith, Janet Webster and Deb Mathis were nominated from the floor. A motion was made by Linda McNutt and seconded by Sherry Farrow to accept Roz Smith, Janet Webster and Deb Mathis for the 2011-2012 Nominating Committee. The motion was unanimously approved.

**Minutes continued,**

**Reading Rally**

Leighsan Harrod announced that due to work constraints, our Reading Rally Chair, Debra Harvey, has been unable to hold any committee meetings or make plans for the Reading Rally. Unless someone comes forward to chair this event, we will not have a 2011 Reading Rally.

**Budget**

Treasurer Lynn Harbert presented the 2012 Proposed Budgets as follows:

**Operating Budget**

Total Receipts	\$16,065.00
Total Disbursements	<u>\$16,504.00</u>
Net Proceeds (Receipts less Disbursements)	- \$ 439.00

**BCDP Budget**

Total Receipts	\$18,600.00
Total Disbursements	<u>\$19,960.00</u>
Net Proceeds (Receipts less Disbursements)	- \$ 1,360.00

A motion was made by Lynn Harbert and seconded by Diane Kidwell to accept the 2012 Proposed Operating and BCDP Budgets as presented. The motion was unanimously approved.

**Bylaw Changes**

1. Memphis Chapter recommends removing the non-compete clause from the Corporate and Chapter Bylaws.
2. Detroit-Windsor recommends removing the limitation on the number of representatives a member firm may have in a Chapter, however, a member firm may have no more than three votes.
3. Corporate Board of Directors recommends that executives and representatives of all member firms as well as Executive Women International are fully informed of a Chapter's decision to dissolve a Chapter.

**Instruction of Annual Meeting Delegates:**

A motion was made by Linda McNutt and seconded by Diane Kidwell to send the Delegates to the Annual Meeting informed and uninstructed. The motion was unanimously approved.

**Membership**

Membership Chair, Carole George, informed the chapter of a new program to enter your name for a drawing to win cash or gift cards by recruiting new member firms.

Minutes continued,

**Ways & Means:**

Ways & Means Director, Diane Kidwell, announced that the "All About Him" raffle raised \$2,340. James Smith was the winner of the drawing.

**Dates to Remember:**

- ✓ September 13, 2011, 5:30 p.m., networking and 5:45 p.m., program – Board Installation, Embassy Suites
- ✓ September 22-24, 2011 – Leadership Conference & Annual Meeting (LCAM), Minneapolis, MN

**ADJOURNMENT**


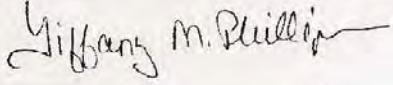
President Leighsan Harrod adjourned the meeting at 7:11 p.m.

Respectfully submitted,

Approved,

By: \_\_\_\_\_  
 Lisa Kilby

By: \_\_\_\_\_  
 Leighsan Harrod, President

		Minutes of the Board of Directors Meeting EWI of Little Rock EWI® September 13, 2011
<b>Call to Order:</b>	7:00 p.m., Embassy Suites Ambassador VII Room, President Linda McNutt presiding	
<b>Roll Call:</b>	Members Present: Linda McNutt, President Sherry Farrow, VP/Pres. Elect Tiffany Phillips, Secretary Lynn Harbert, Treasurer Darlean King, Sergeant-At-Arms Carole George, Membership Lisa Kilby, Publications Director Carole George, Membership Director Linda Young, Program Director Diane Kidwell, Ways and Means	
<b>Minutes:</b>	Newly installed Board Members met briefly around the podium. Carole George and Diane Kidwell nominated Sherry Farrow to the Nominating Committee; she accepted the nomination. Members then discussed the October calendar, and scheduled a time and place for the next Board Meeting. Per President Linda McNutt, the meeting will take place DataMax Micro on Tuesday, October 25 <sup>th</sup> at 5:15 pm.	
<b>Treasurer's Report:</b>	As this was the first meeting of the Board and took place immediately after installation, no Treasurer's Report was given.	
<b>Committee Reports:</b>	Since this was the first Board Meeting for the 2011 – 2012 Board, there was no further business to report.	
<b>Adjournment:</b>	7:15 pm	
<b>Approved:</b> Linda McNutt, President	<b>Submitted:</b> Tiffany Phillips, Secretary	
		

**Minutes continued,****MINUTES OF CHAPTER MEETING  
LITTLE ROCK CHAPTER  
EXECUTIVE WOMEN INTERNATIONAL**

October 18, 2011

**CALL TO ORDER**

The Little Rock Chapter of EWI Chapter Meeting was held at Bosco's Restaurant. The meeting was called to order by President Linda McNutt at 5:47 pm.

**ROLL CALL**

During roll call representatives were asked to tell whether or not they like Broadway musicals and if so what is their favorite show.

**INVOCATION**

The invocation was given by Roz Smith of Aristotle.

**DINNER****MEETING:****Chapter Retreat:**

President Linda McNutt thanked everyone who turned in their questionnaires. The following are the results of the questionnaires:

1. **Potlucks:** A majority of representatives are in favor of having both the chili potluck and the salad & dessert potlucks, however, the chili potluck was voted the favorite potluck.
2. **Programs:** The most popular part of the monthly program is networking or promoting their member firms.
3. **Monthly Raffles:** A majority of the representatives are in favor of continuing our monthly raffles although several felt we should skip a few months.
4. **Scholarships:** Most are in favor of keeping both EWISP and ASIST but lower the amounts. A few suggested the scholarships be lowered by \$500 each. Others suggested discontinuing EWISP and concentrate on ASIST.

President Linda McNutt shared what she learned from guest speaker, David Horsager, at LCAM. Mr. Horsager says that "Trust not money, is the currency of life". He shared his 8 Pillars of Trust: (1) Clarity, (2) Compassion, (3) Character, (4) Competency, (5) Commitment, (6) Connection, (7) Contribution and (8) Consistency. A "Self Assessment" test was distributed for everyone to take and see what Pillars are strong, what Pillars could be strengthened and what Pillars need to be addressed.

**Membership**

Membership Chair, Carole George, informed the chapter that due to corporate conflicts the recruiting contest will not begin until January 2012. However representatives will be credited for any new member firms they recommended till the end of 2011.

Minutes continued,

**Ways & Means Monthly Raffle:**

Lynn Harbert won the raffle prize of a popcorn gift basket & \$100 gift card to Bed Bath & Beyond.

**Dates to Remember:**

- ✓ November 8, 2011, 5:30 p.m., networking and 5:45 p.m., Program – Arkansas Food Bank, Chenal Country Club

**ADJOURNMENT**

President Linda McNutt adjourned the meeting at 7:13 p.m.

Respectfully submitted,

Approved,

By: \_\_\_\_\_  
Lisa Kilby

By: \_\_\_\_\_  
Linda McNutt, President